



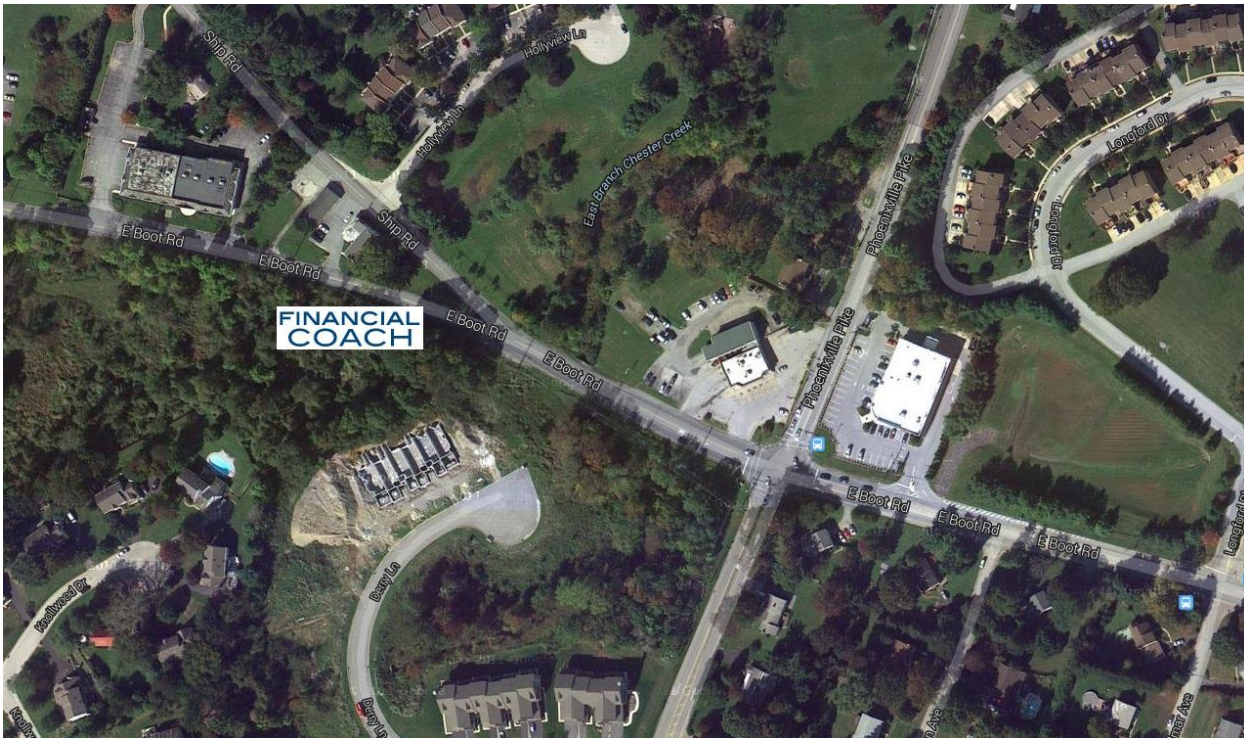
Detailed Directions to our new West Chester Office

940 E. Boot Road, West Chester, PA 19380

P: 484-887-0452

*Beginning at the intersection of E. Boot Road and Route 202:

- Cross over Phoenixville Pike, passing McLaughlin's Automotive on your right
- Stay to the left when E Boot Road Y-Splits with Ship Road
- Our building is **immediately on the left** following this split in the road



**Please see the following page for directions to the intersection of E. Boot Road and Route 202.*

From Delaware

- Heading towards Philadelphia on I-95 North take Exit #8 for Concord Pike/US-202 N (*toward West Chester*)
- Follow signs for Delaware 141 S and merge onto US-202 N/Concord Pike, follow US-202 N for approx. 12 miles
- Merge onto US-202N/US-322W/W Chester Bypass via ramp to Paoli/Downingtown, continue to follow US-202 N for approx. 4 ½ miles
- Take exit for Boot Road then turn left onto E Boot Road to find our office on left after approx. 1 mile

From Route 352 (Media)

- Take PA-352 North/Middletown Road to PA-3/West Chester Pike and make a left
- Make a quick slight right back onto PA-352 N/N Chester Road
- Turn left onto E Boot Road to find our office on left after approx. 3 ½ miles

From Route 202 (West Chester)

- Heading north on US-202 N, take exit for Boot Road then turn left onto E Boot Road to find our office on left after approx. 1 mile

From Route 76 (Philadelphia)

- Heading west on I-76 W, bear right taking exit for 327-328A-328B for US-202 N (*toward US-422 W/King of Prussia/W Chester/Pottstown*)
- Take Exit #328A on left to merge onto US-202 S (*toward West Chester*), follow US-202 S for approx. 13 ½ miles
- Take exit for Boot Road then turn right onto E Boot Road to find our office on left after approx. 1 mile

From Route 422 (Pottstown)

- Heading east on US-422 E, bear right at fork following signs for US-202 S/W Chester and merge onto US-202 S, follow US-202 S for approx. 12 ½ miles
- Take exit for Boot Road then turn right onto E Boot Road to find our office on left after approx. 1 mile

From Southern New Jersey (Commodore Barry Bridge)

- Exiting Commodore Barry Bridge, keep left at fork following signs for US-322 W/Wilmington and merge onto I-95S/US-322 W
- Take Exit #3A to merge onto US-322 W/Conchester Hwy (*toward West Chester*), follow US-322 W for approx. 7 ½ miles
- Turn left onto US 1 S/US-322 W/Baltimore Pike
- Turn right onto US-202 N/US-322 E/Wilmington Pike, follow for approx. 4 ½ miles
- Merge onto US-202 N/US-322 W/W Chester Bypass via ramp to Paoli/Downingtown, continue to follow US-202 N for approx. 4 ½ miles
- Take exit for Boot Road then turn left onto E Boot Road to find our office on left after approx. 1 mile

From Southern New Jersey (Ben Franklin or Walt Whitman Bridge)

- Heading west on I-76 W take exit for 327-328A-328B for US-202 N (*toward US-422 W/King of Prussia/W Chester/Pottstown*)
- Take Exit #328A on left to merge onto US-202 S (*toward West Chester*), follow for approx. 13 ½ miles
- Take exit for Boot Road then turn right onto E Boot Road to find our office on left after approx. 1 mile